

Installation of MATLAB and Simulink for BEST Robotics 2014

Contact: bestrobotics@mathworks.com

IMPORTANT

Continue if you are 13 years or older.

(If below the age of 13, contact a teacher or mentor)

Make sure you have download permissions on the PC/Mac.

(If not, contact your parent/mentor/teacher for help)

Be prepared to spend 30-45 mins to complete MATLAB and Simulink install.

Note: If you are looking for instructions to install the **Simulink Library for VEX** (you need to install this library after installing MATLAB and Simulink), go [here](#).

System Requirements

Windows

- 32-bit or 64-bit OS
- Windows XP or later versions
- > 1 GB of hard disk space
- 1024 MB of RAM (2048 MB is recommended)

Mac

- 64-bit OS
- Mac OS 10.7.4+ or higher
- > 1 GB of hard disk space
- 1024 MB of RAM (2048 MB is recommended)

Overview: Installation Steps

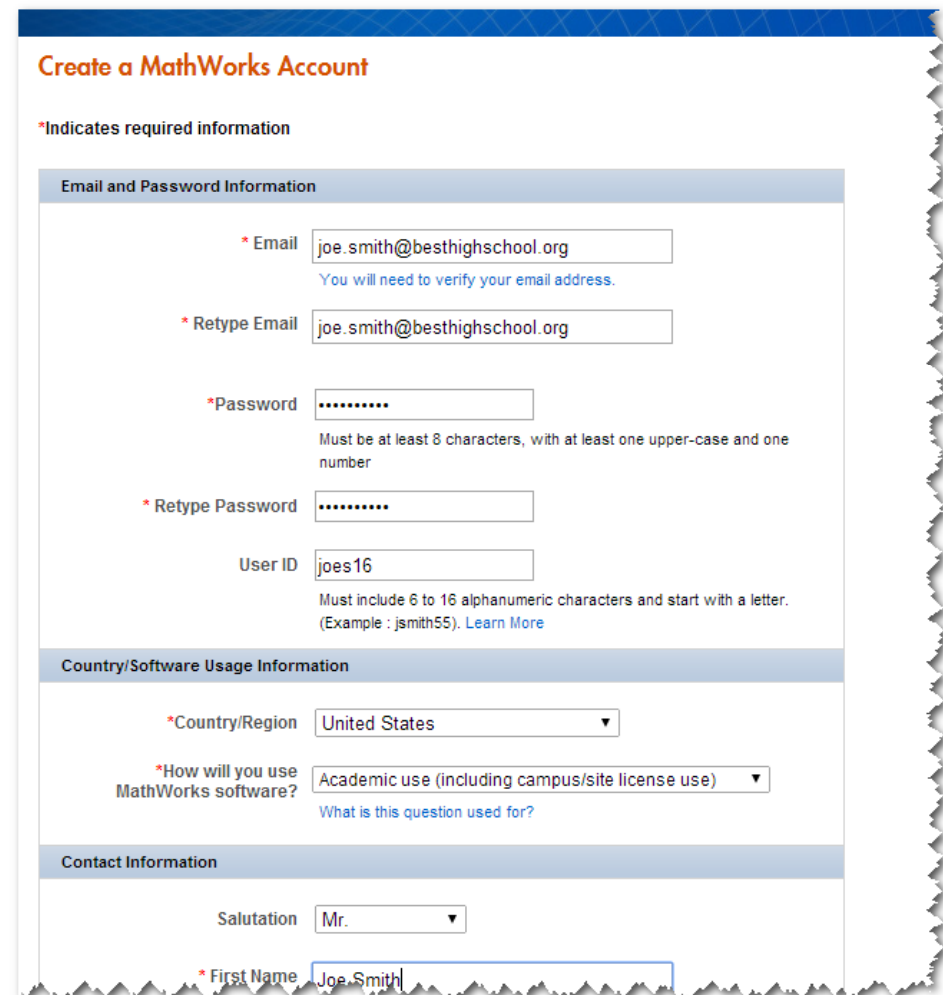
1. Create MathWorks account
2. Associate your MathWorks account to the license
3. Download the software
4. Install the software
5. Activate the software
6. Next Steps

Step 1: Create MathWorks Account

Go to <https://www.mathworks.com/accesslogin/createProfile.do>

NOTE:

- Remember your Email and Password information for later use
- For ‘**How will you use MathWorks software?**’, select “**Academic use**”



Create a MathWorks Account

*Indicates required information

Email and Password Information

* Email
You will need to verify your email address.

* Retype Email

* Password
Must be at least 8 characters, with at least one upper-case and one number

* Retype Password

User ID
Must include 6 to 16 alphanumeric characters and start with a letter.
(Example : jsmith55). [Learn More](#)

Country/Software Usage Information

* Country/Region

* How will you use MathWorks software?
What is this question used for?

Contact Information

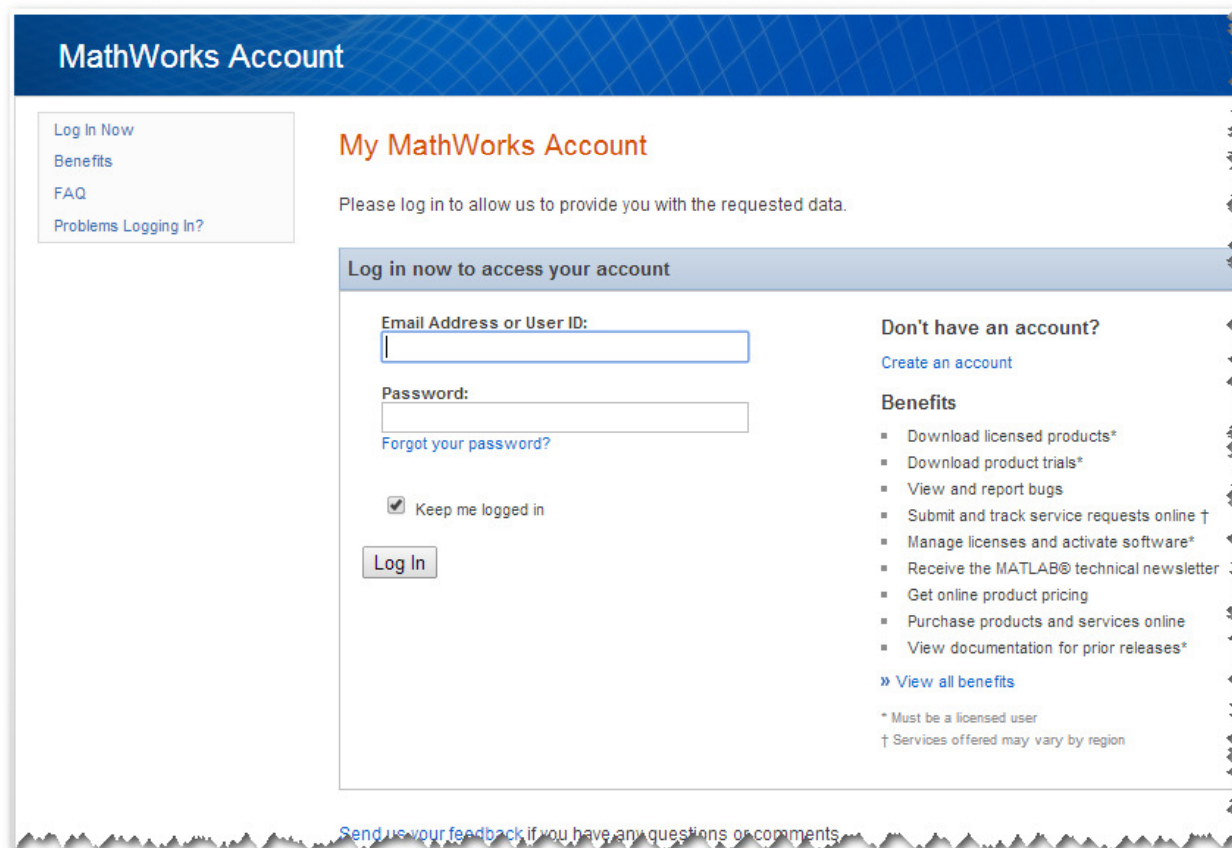
Salutation

* First Name

Step 2: Associate to a MathWorks License

1. Complete Step 1 (Create MathWorks Account)
2. Login to your MathWorks account here:

<https://www.mathworks.com/accesslogin/login.do>



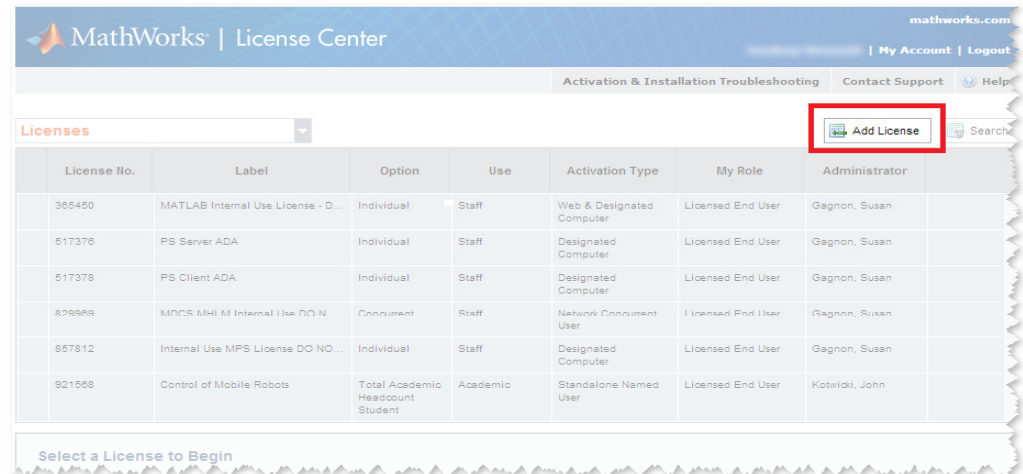
The screenshot shows the MathWorks Account login page. At the top, there is a blue header with the text "MathWorks Account". Below this, on the left, is a sidebar with links: "Log In Now", "Benefits", "FAQ", and "Problems Logging In?". The main content area is titled "My MathWorks Account" and contains the message "Please log in to allow us to provide you with the requested data." Below this is a section titled "Log in now to access your account" which contains a login form. The form has two input fields: "Email Address or User ID:" and "Password:". Below the password field is a link "Forgot your password?". There is a checkbox labeled "Keep me logged in" which is checked. A "Log In" button is located below the form. To the right of the form is a section titled "Don't have an account?" with a link "Create an account". Below this is a section titled "Benefits" with a list of benefits: "Download licensed products*", "Download product trials*", "View and report bugs", "Submit and track service requests online †", "Manage licenses and activate software*", "Receive the MATLAB® technical newsletter", "Get online product pricing", "Purchase products and services online", and "View documentation for prior releases*". Below the list is a link "» View all benefits". At the bottom of the page, there is a footer with the text "Send us your feedback if you have any questions or comments".

Step 2: Associate to a MathWorks License

3. Access the License Center here:

<https://www.mathworks.com/licensecenter>

a) Click on 'Add License'



MathWorks | License Center

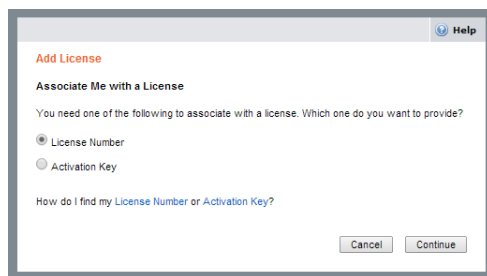
Activation & Installation Troubleshooting | Contact Support | Help

Licenses

License No.	Label	Option	Use	Activation Type	My Role	Administrator
385450	MATLAB Internal Use License - D...	Individual	Staff	Web & Designated Computer	Licensed End User	Gagnon, Susan
517376	PS Server ADA	Individual	Staff	Designated Computer	Licensed End User	Gagnon, Susan
517378	PS Client ADA	Individual	Staff	Designated Computer	Licensed End User	Gagnon, Susan
828868	MDCS.MHI.M.Internal Use DO N...	Concurrent	Staff	Network Concurrent User	Licensed End User	Gagnon, Susan
857812	Internal Use MPS License DO NO...	Individual	Staff	Designated Computer	Licensed End User	Gagnon, Susan
821558	Control of Mobile Robots	Total Academic Headcount Student	Academic	Standalone Named User	Licensed End User	Kotwiski, John

Select a License to Begin

b) When prompted, provide the License # & Activation Key (they are available in the Email from MathWorks)



Add License

Associate Me with a License

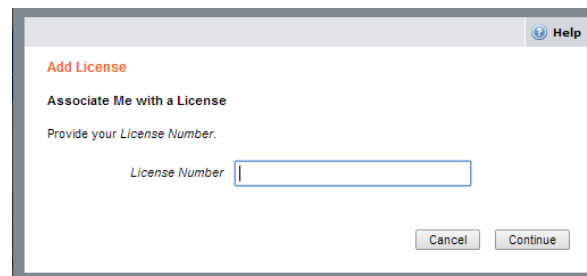
You need one of the following to associate with a license. Which one do you want to provide?

License Number

Activation Key

How do I find my License Number or Activation Key?

Cancel Continue



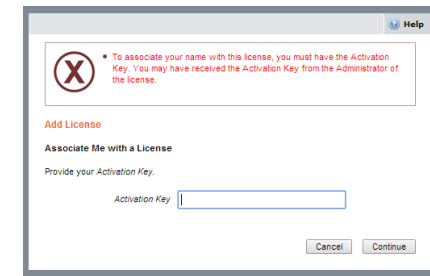
Add License

Associate Me with a License

Provide your License Number.

License Number

Cancel Continue



Add License

Associate Me with a License

Provide your Activation Key.

Activation Key

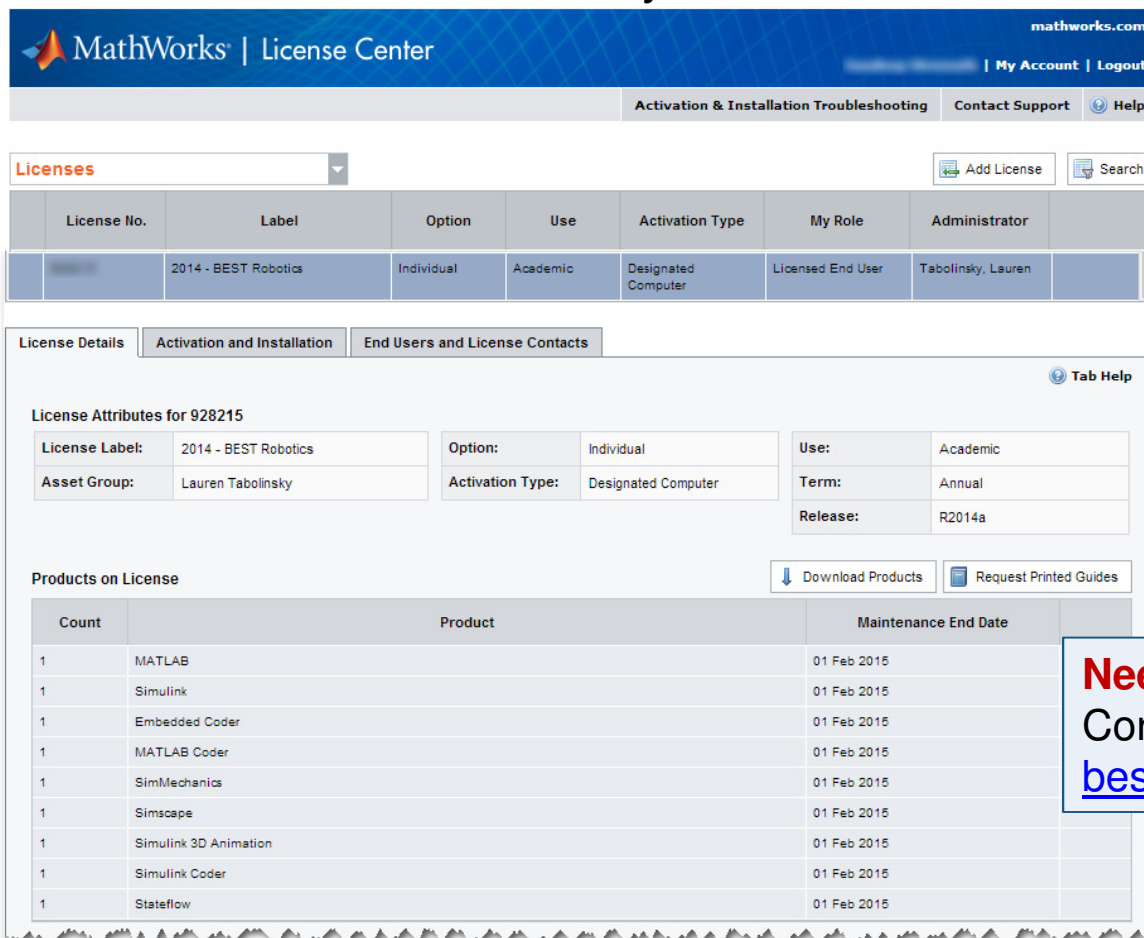
Cancel Continue

X To associate your name with this license, you must have the Activation Key. You may have received the Activation Key from the Administrator of the license.

Step 2: Associate to a MathWorks License

4. Verify association in License Center

License Label should say '2014- BEST Robotics'



The screenshot shows the MathWorks License Center interface. At the top, there's a navigation bar with 'mathworks.com', 'My Account', and 'Logout'. Below that, there are links for 'Activation & Installation Troubleshooting', 'Contact Support', and 'Help'. The main content area is titled 'Licenses' and includes an 'Add License' button and a search icon. A table lists licenses, with one entry for '2014 - BEST Robotics'. Below the table, there are tabs for 'License Details', 'Activation and Installation', and 'End Users and License Contacts'. The 'License Details' tab is active, showing 'License Attributes for 928215'. This section includes fields for 'License Label' (2014 - BEST Robotics), 'Option' (Individual), 'Use' (Academic), 'Asset Group' (Lauren Tabolinsky), 'Activation Type' (Designated Computer), 'Term' (Annual), and 'Release' (R2014a). Below this, there's a 'Products on License' section with a table listing products and their maintenance end dates.

Count	Product	Maintenance End Date
1	MATLAB	01 Feb 2015
1	Simulink	01 Feb 2015
1	Embedded Coder	01 Feb 2015
1	MATLAB Coder	01 Feb 2015
1	SimMechanics	01 Feb 2015
1	Simscape	01 Feb 2015
1	Simulink 3D Animation	01 Feb 2015
1	Simulink Coder	01 Feb 2015
1	Stateflow	01 Feb 2015

Need Help?

Contact us:

bestrobotics@mathworks.com

Step 3: Download the Software

Before you start: Make sure you have download permissions

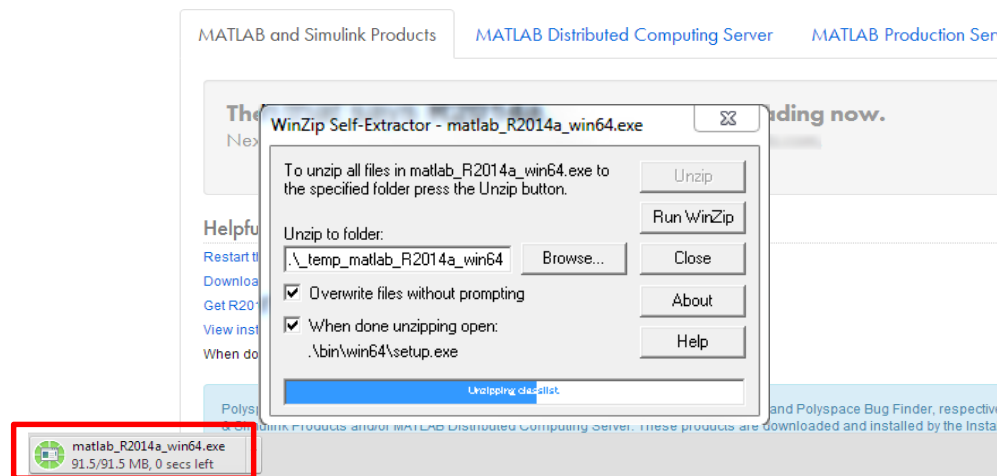
1. Go to http://www.mathworks.com/downloads/web_downloads/
2. Click the blue button that says **R2014a**.



3. Click the blue button that says **R2014a Installer**.
- this will download the installer file (*.exe)

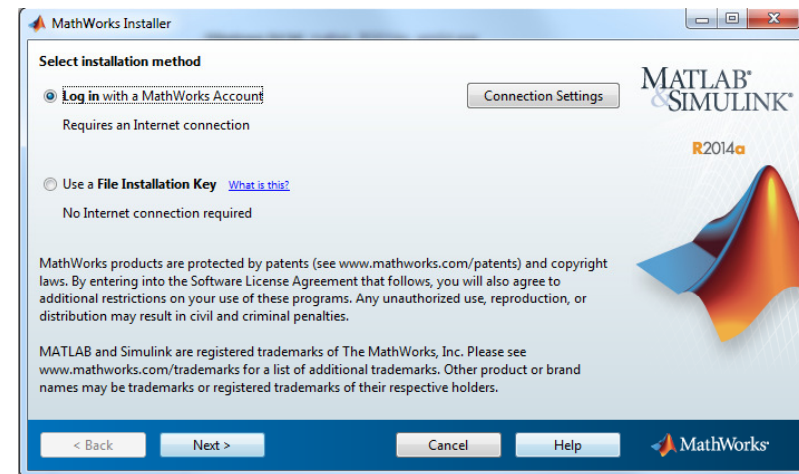


4. Open the installer file (*.exe) to extract and launch the installer.



Step 4: Install the Software

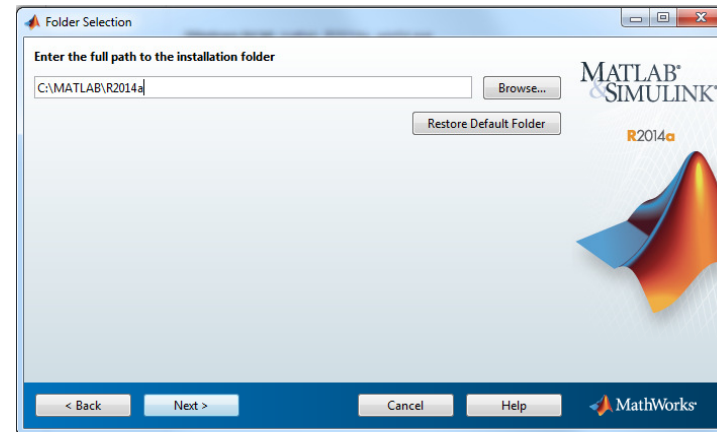
1. When **MathWorks Installer** is launched, select **Log in with a MathWorks Account** and continue through the Installer



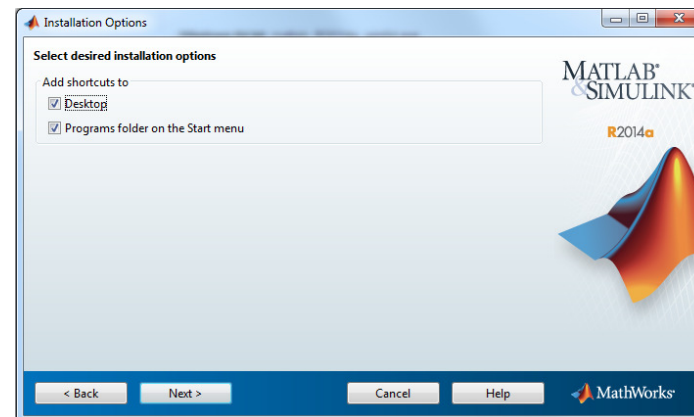
2. At the **License Agreement**, select **Yes** and continue
3. When prompted to **Log In**, use your MathWorks Account info
4. At **License Selection** dialog, choose 'Select a license:' and choose the one with the **Label: 2014 – BEST Robotics** and continue

Step 4: Install the Software

- Next, it will prompt you select an **Installation Folder**
 - use C:\MATLAB\R2014a, it will create this folder if doesn't exist

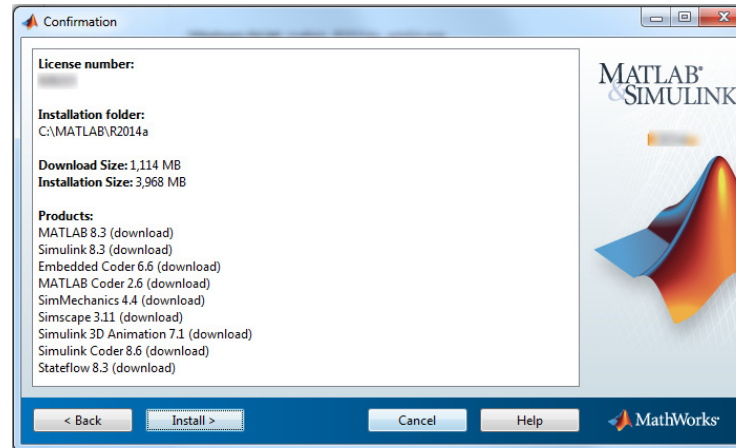


- At **Product Selection** window, don't change anything and click Next
- At Installation Options window, check both **Desktop** and **Program folder on the Start menu** and continue

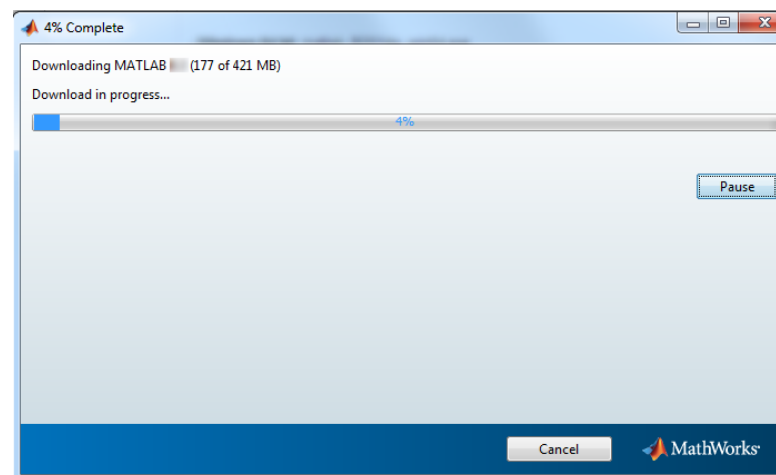


Step 4: Install the Software

7. At **Confirmation** dialog, verify the Installation folder and click **Install**>

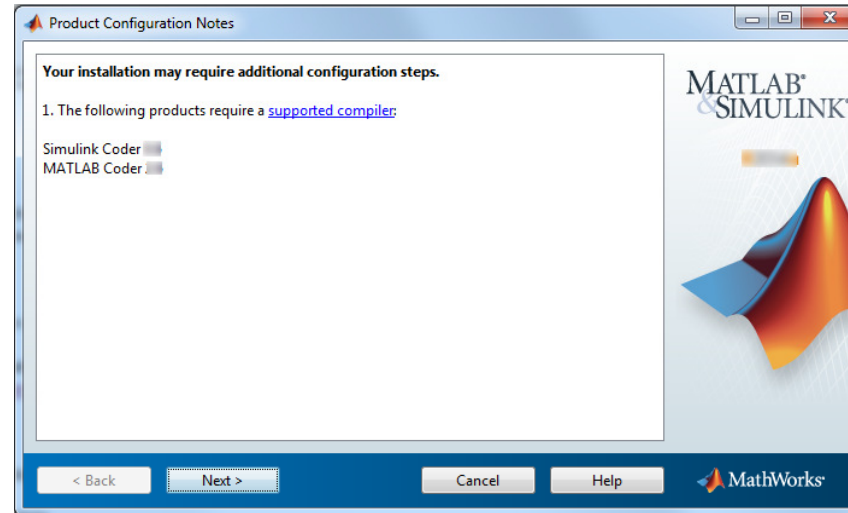


The installation process will begin. It takes **about 20-30 mins to complete this step**, so now is the time to take a quick break!



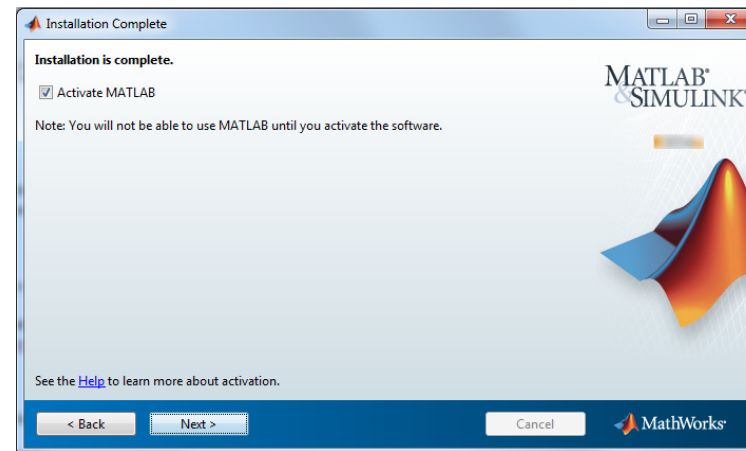
Step 4: Install the Software

8. At **Product Configuration Notes** dialog, just click **Next** to continue

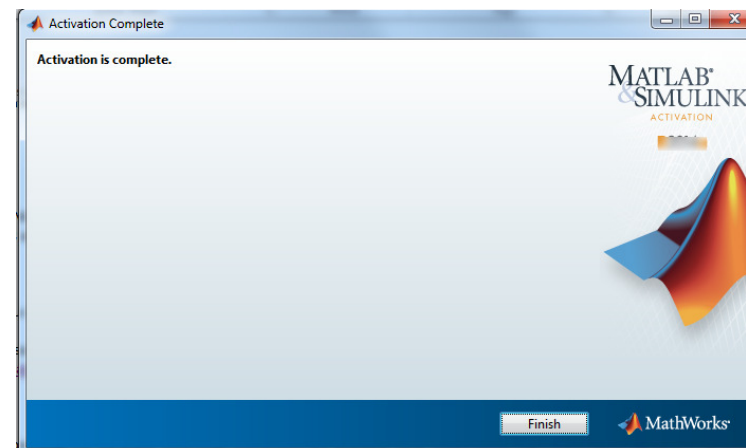


Step 5: Activate the Software

1. At the **Installation Complete** prompt, ensure to check **Activate MATLAB** (default is checked) and continue



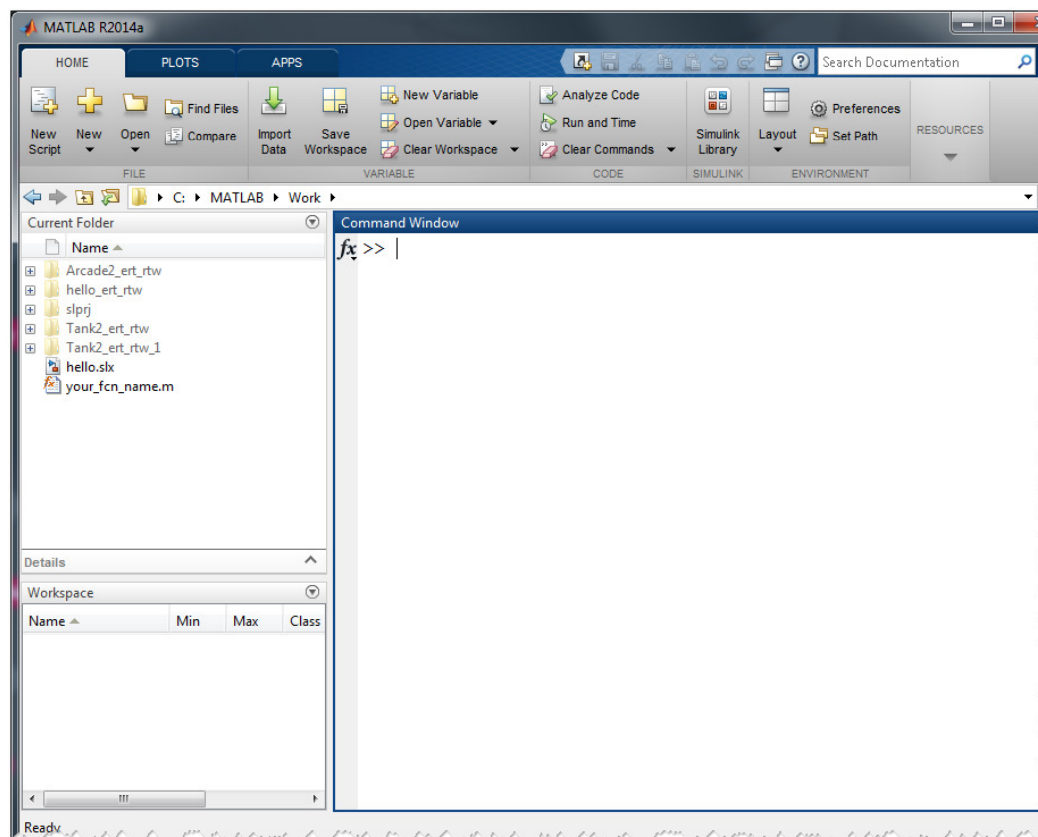
2. At the **Confirmation** dialog, click **Confirm**.
3. Activation has been completed. Click **Finish**.



Almost done...

Last step is to quickly verify that the installation was successful by launching MATLAB.

1. Go to the computer's desktop
2. Find the **MATLAB R2014a** icon and double-click to open.
3. This should launch the MATLAB Desktop Window (it will take a few mins when you launch it the first time)



Done!

Contact us:
bestrobotics@mathworks.com